

# Vision Inspection:

“Now recalls are fewer - and labour costs are lower.”

Using camera and customisable computer software, vision technology automatically inspects your product and packaging so you minimise: **rework, rejections and recalls.**

And, when you use iQVision, an independent systems integrator, you aren't just guaranteed the best-fit solution from one of the industry's 5 leading brands (Cognex, Dalsa, Datalogic, Omron, Sick)—you also get the kind of expertise that can increase your profits.

## Lower Waste and Increase Control: Vision Inspection Checks Product AND Packaging Criteria.



### Packaging Quality

Check ID, Labels, Packaging Closures and Formations:

- Verify correct Trace and ID Codes: from use-by-date to 2-D barcodes.
- Identify front and back matching labels and match patterns
- Detect incorrect label applications or missing information early.



### Check Product Component

Presence and Formation:

- Inspect product form, length, colour or fill level.
- Count product numbers.
- Assess dimensions and surface integrity.
- Cap or lid presence, seal and fit, package tamper, type and colour.

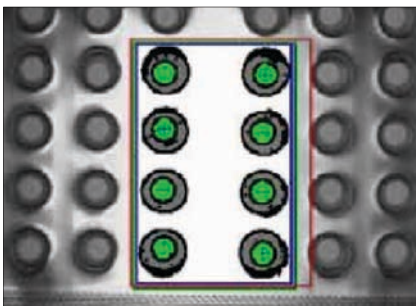


### Process Control

Automate product handling:

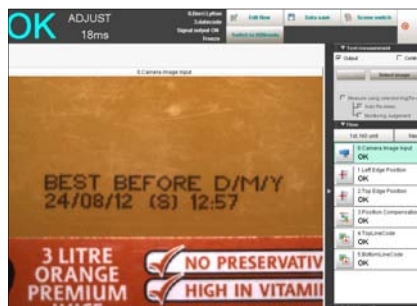
- Sort product based on colour, size, shape
- Stop the line to fix issues in-line
- Get data to improve process

## Want To Really Boost Your Line Efficiency? Camera + Software + Expert Integration.



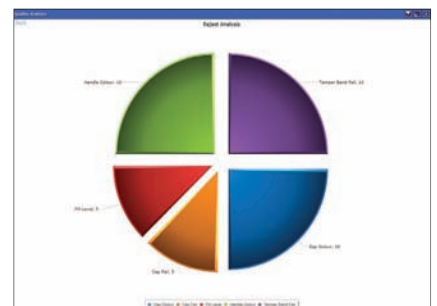
### Inspect Product Quality - without effort.

A fully formed, same-coloured pill must be in every bubble or an alarm will sound.



### Hands-Free: Check Packaging Integrity.

Scanning for matching front and back labels, correct batch code and tamper seals - only shelf-ready bottles are packed.



### Collect data about product and packaging rejections

so you can improve your processes.

## Meet Any Product and Packaging Compliance Standard You Have: *Even On High-Speed Production Lines.*

By automatically inspecting the things you worry about, with cutting edge, real-time, affordable technology, Vision improves your Quality Assurance (Q/A), Process Control and Quality Control (Q/C) without increasing your labour costs.

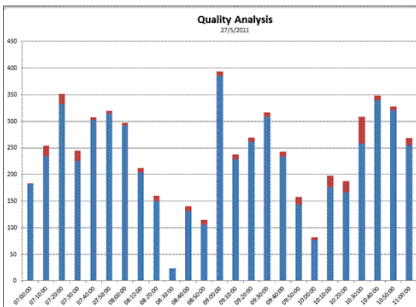
### How Vision decreases your manufacturing costs:



**There's less manual work to do:** Vision checks the criteria you want.



**Vision displays data in a user-friendly interface** and automates product rejection, or stops the line.



**Q/A and Q/C Line control:** iDSNet collects Vision's data to help you pinpoint line problems.

### How does Vision handle products and packaging that does not meet your criteria?

- 1 Vision photographs multiple angles of your product in line.
- 2 Using cutting-edge photo identification software, Vision assesses whether your criteria are met - even amongst multiple line changes.
- 3 Interpreting real-time data, Vision automates management of non-shelf-ready products by rejecting the product, stopping the line or setting off an alarm.
- 4 Realtime reporting software helps you identify causes of rejects to increase your profitability.
- 5 Integration with your Central Control System increases data captured so you can improve systems & processes and prevent long-term problems.



**iQVision: Tailor-designed, best-fit solutions for Australia's pharmaceutical, automotive, timber, and FMCG manufacturers.**

Independent to serve you better, and with the full power of Matthews Australasia behind iQVision you get True 24/7 in-house support.

**Call 1300-478-474 for your Free "Size & Purpose" Site Audit to help you start minimising your rework, rejections and recalls.**



1300 iQVision (1300 478 474)  
info@iqvision.com.au [www.iqvision.com.au](http://www.iqvision.com.au)

**iQVision**  
A Matthews Affiliated Company